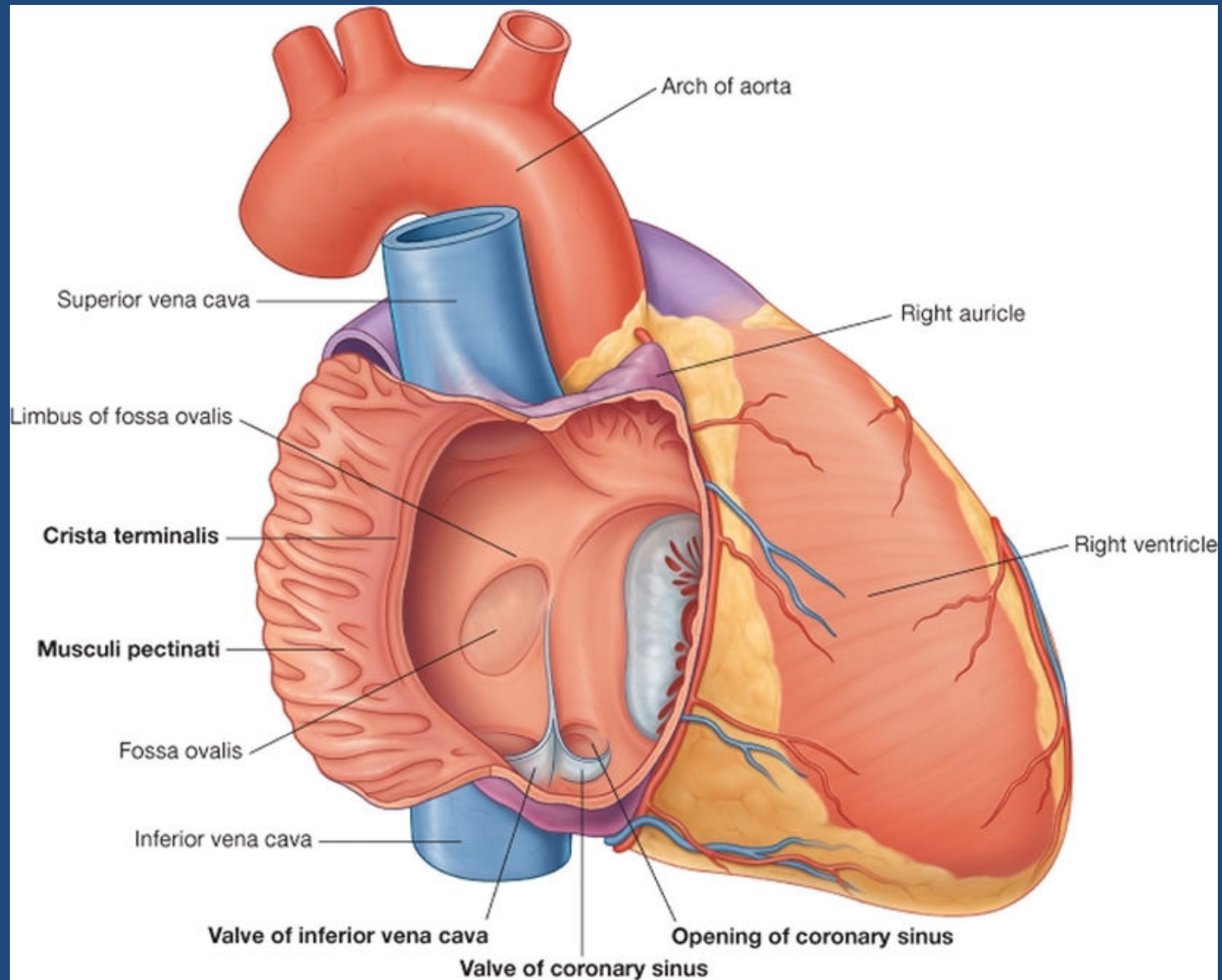




Internal features of the heart, fibrous skeleton, conducting system and innervation

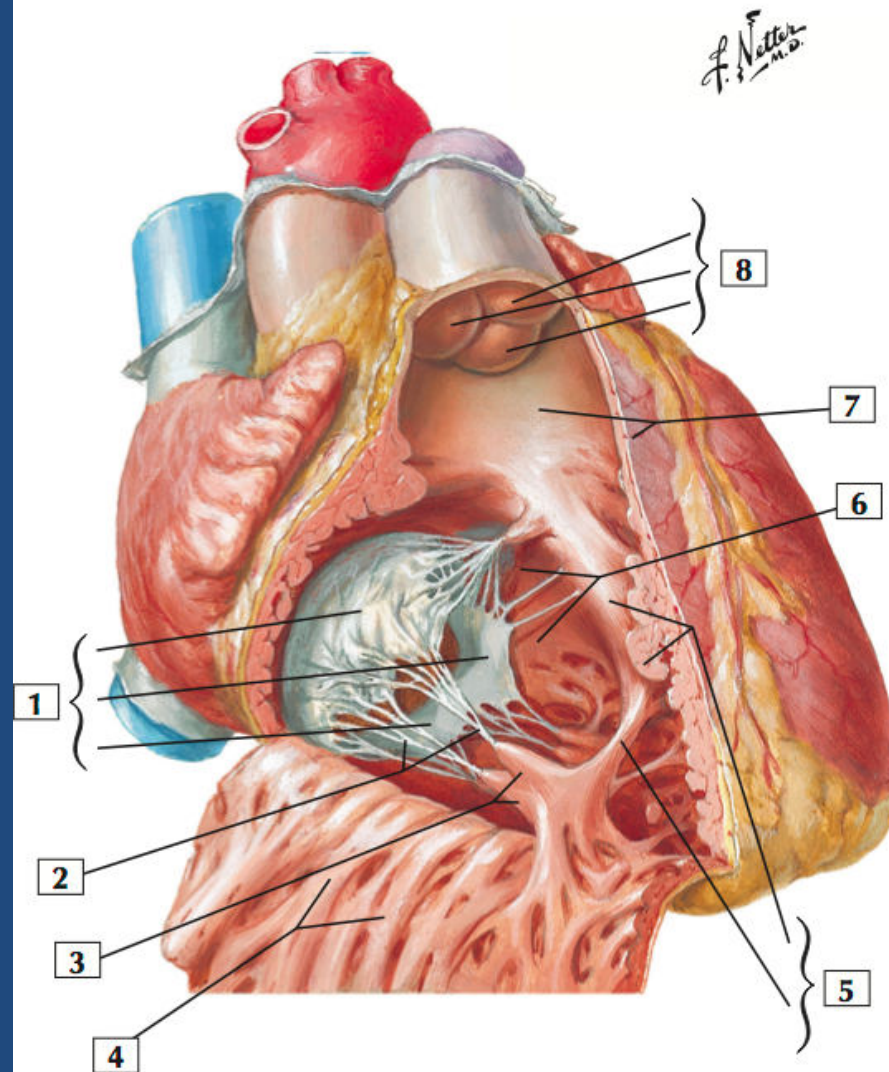
Dr. Rowayda Mohamed

Right atrium

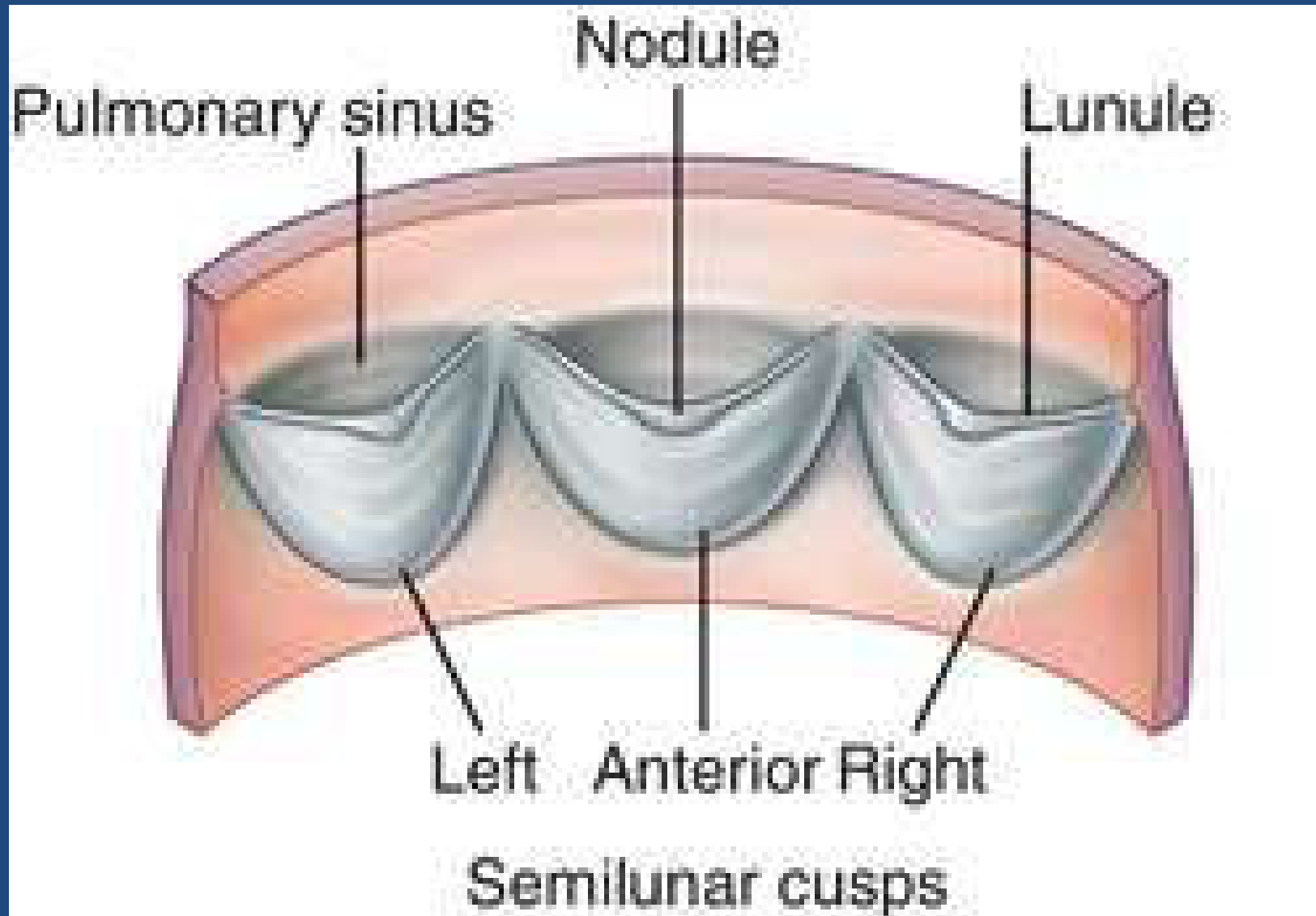


Right ventricle

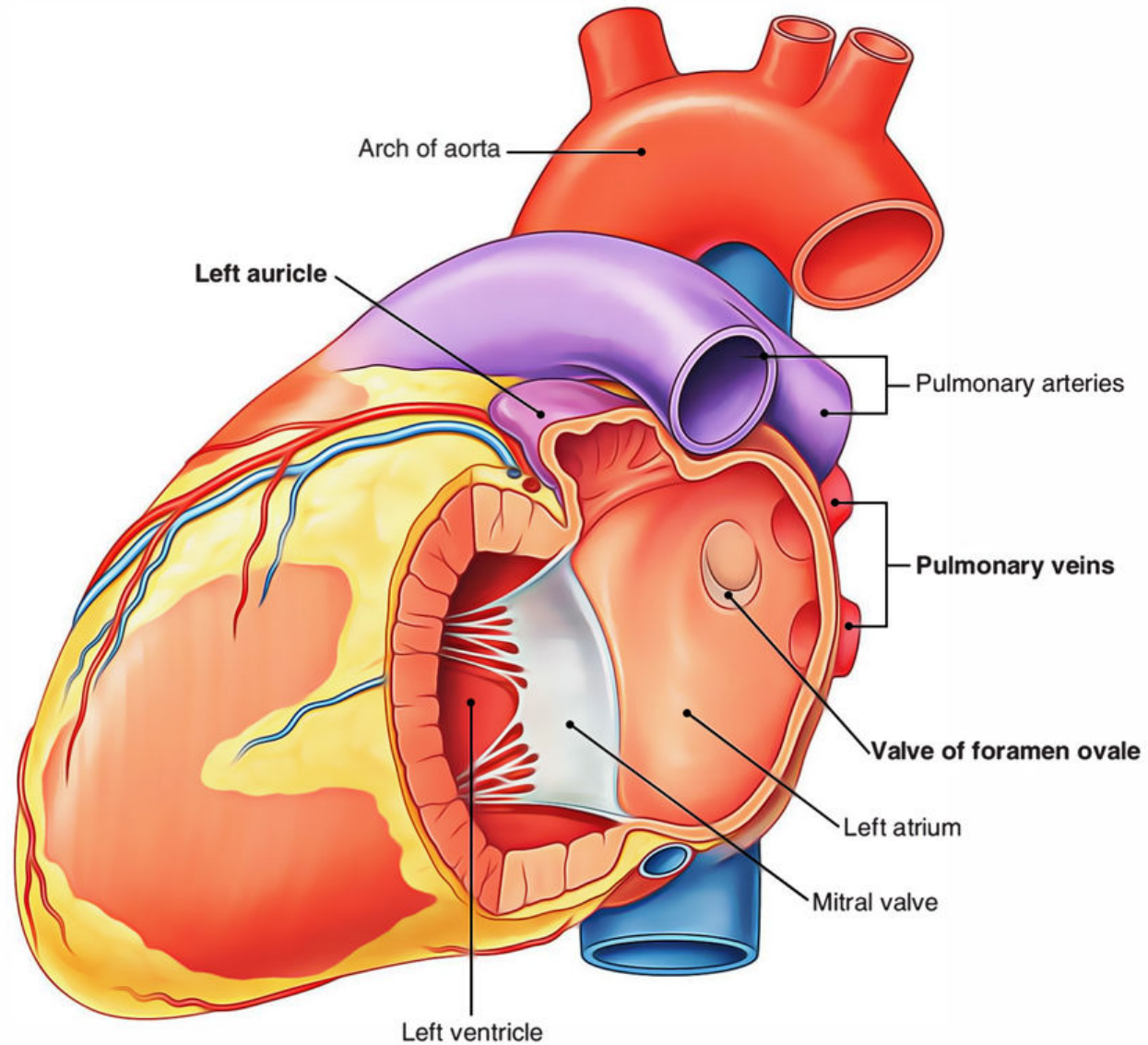
Opened right ventricle: anterior view



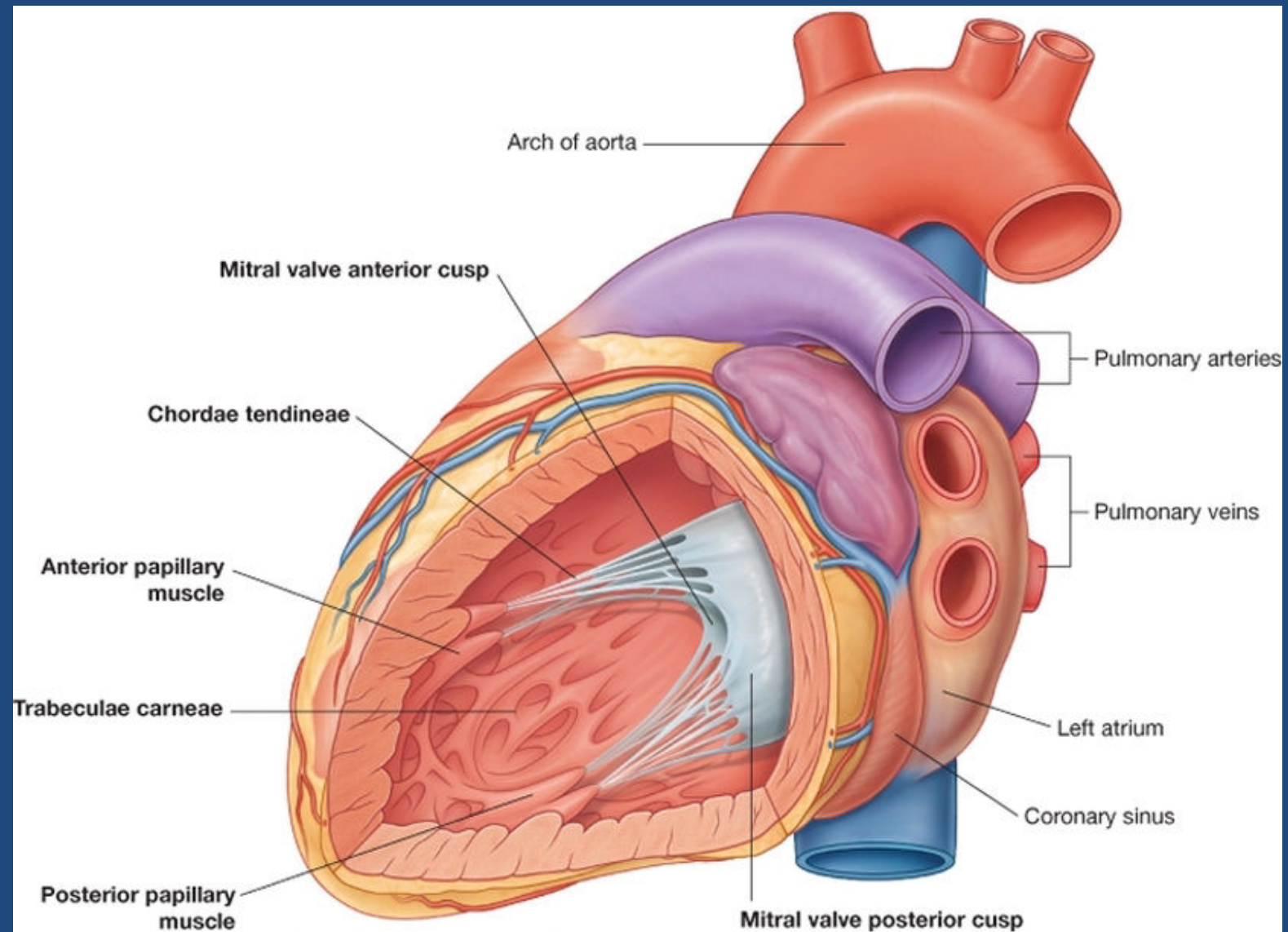
Pulmonary valve



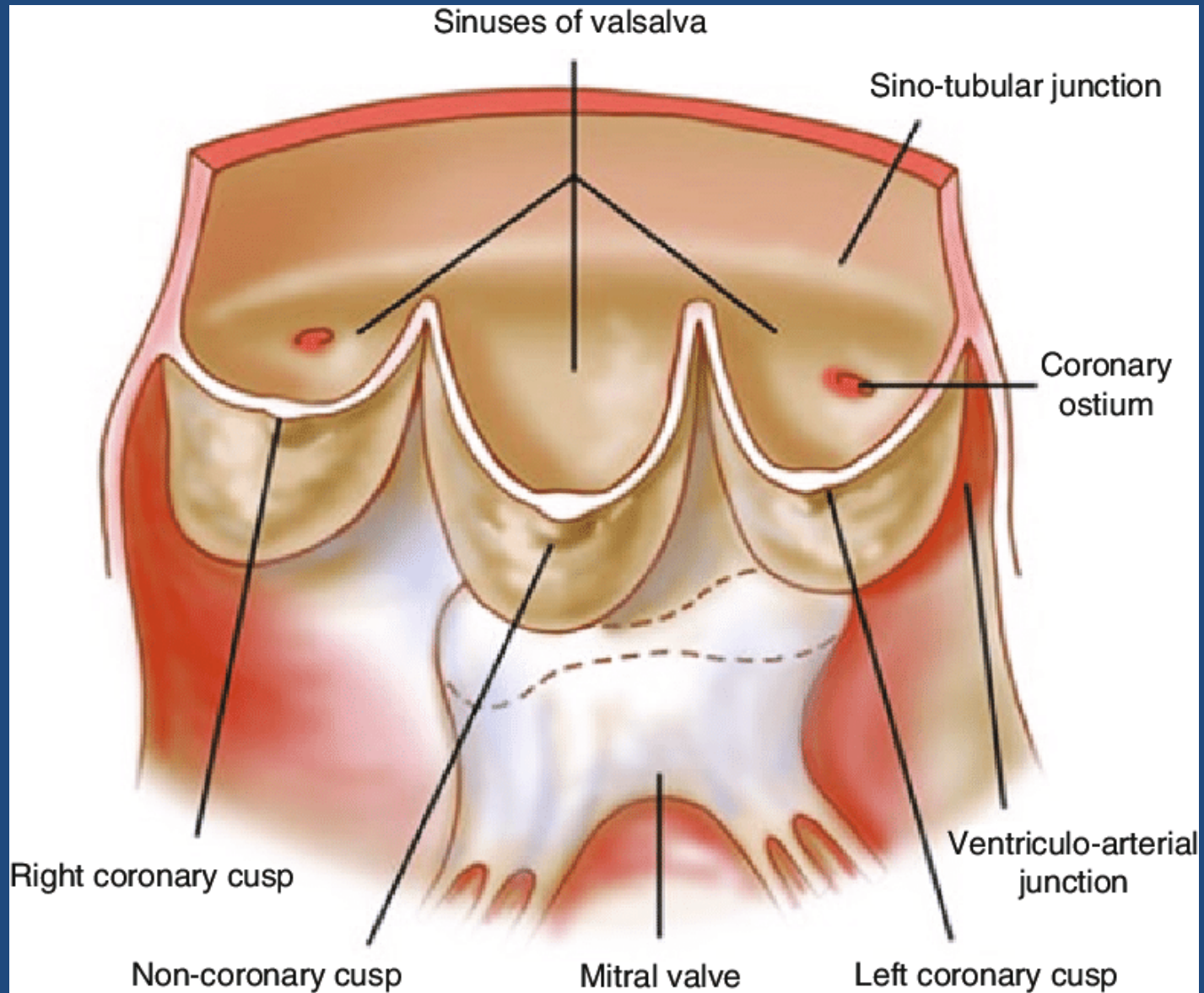
Left atrium



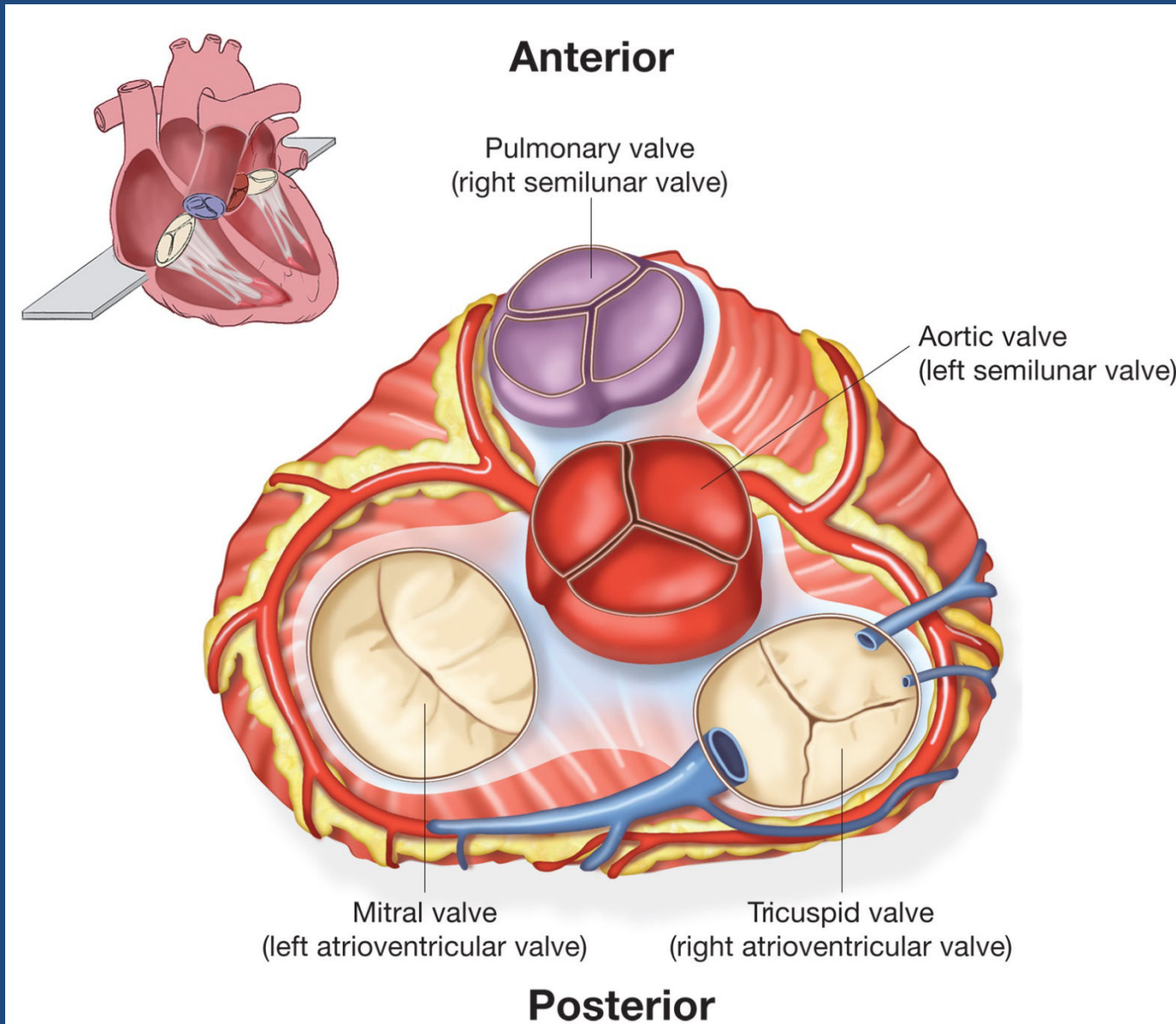
Left ventricle



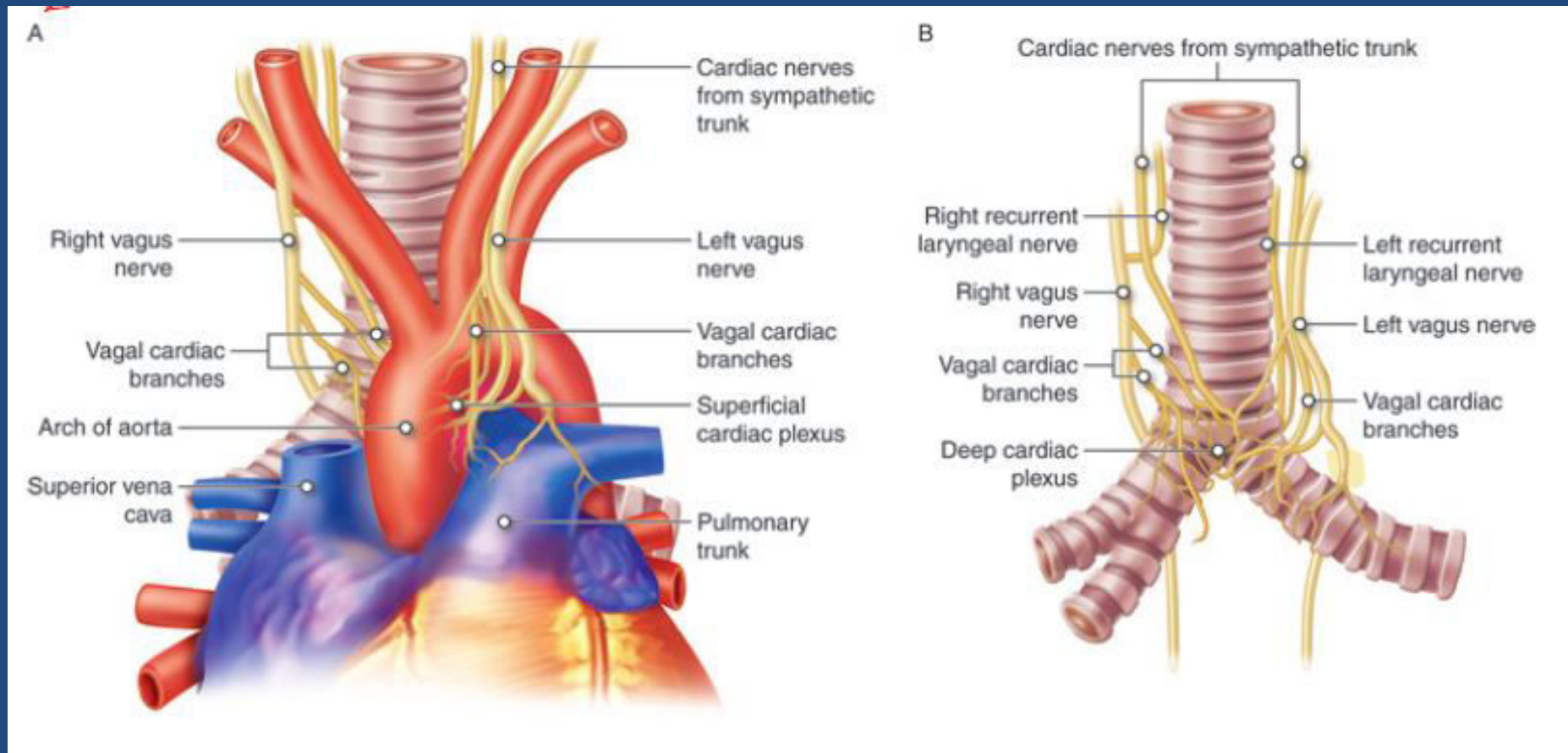
Aortic valve



Fibrous skeleton of the heart

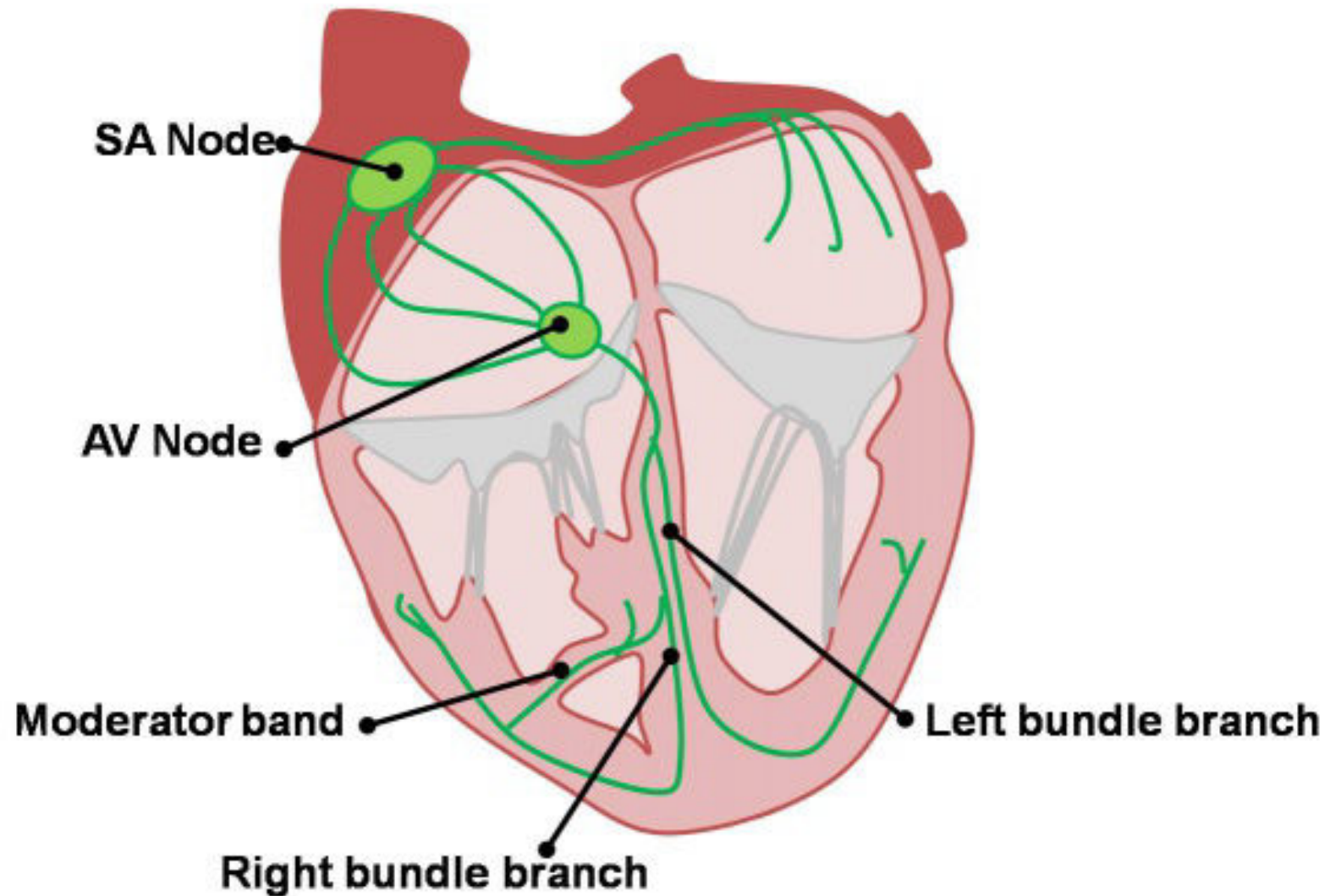


Cardiac plexuses



Conducting system

Cardiac Conduction System



1. The fossa ovalis present in the following chamber of the heart:

- a. Right atrium.
- b. Left atrium.
- c. Right ventricle.
- d. Left ventricle.

2. The posterior part of left atrium is derived embryologically from:

- a. The sinus venosus.
- b. The atrium proper.
- c. The proximal parts of pulmonary veins.
- d. The atrioventricular canal.

3. Which of the following is correct concerning the A.V node :

- a. It passes through the moderator band.
- b. It is situated in the lower and the posterior part of interatrial septum.
- c. It is the pace maker of the heart.
- d. It initiates the excitation wave in each cardiac cycle.

4. Which of the following is correct concerning the cardiac plexuses:

- a. They are three cardiac plexuses.
- b. The superficial cardiac plexus lies posterior to the aortic arch.
- c. The deep cardiac plexus lies inferior to the aortic arch.
- d. The parasympathetic fibres of the plexuse are branches of the 2 vagi.

Thank you